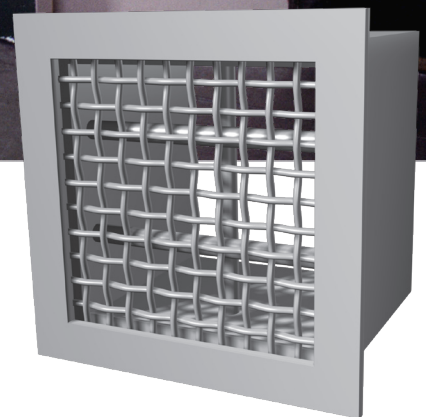


MSSG

MEDIUM SECURITY SCREEN GRILLE



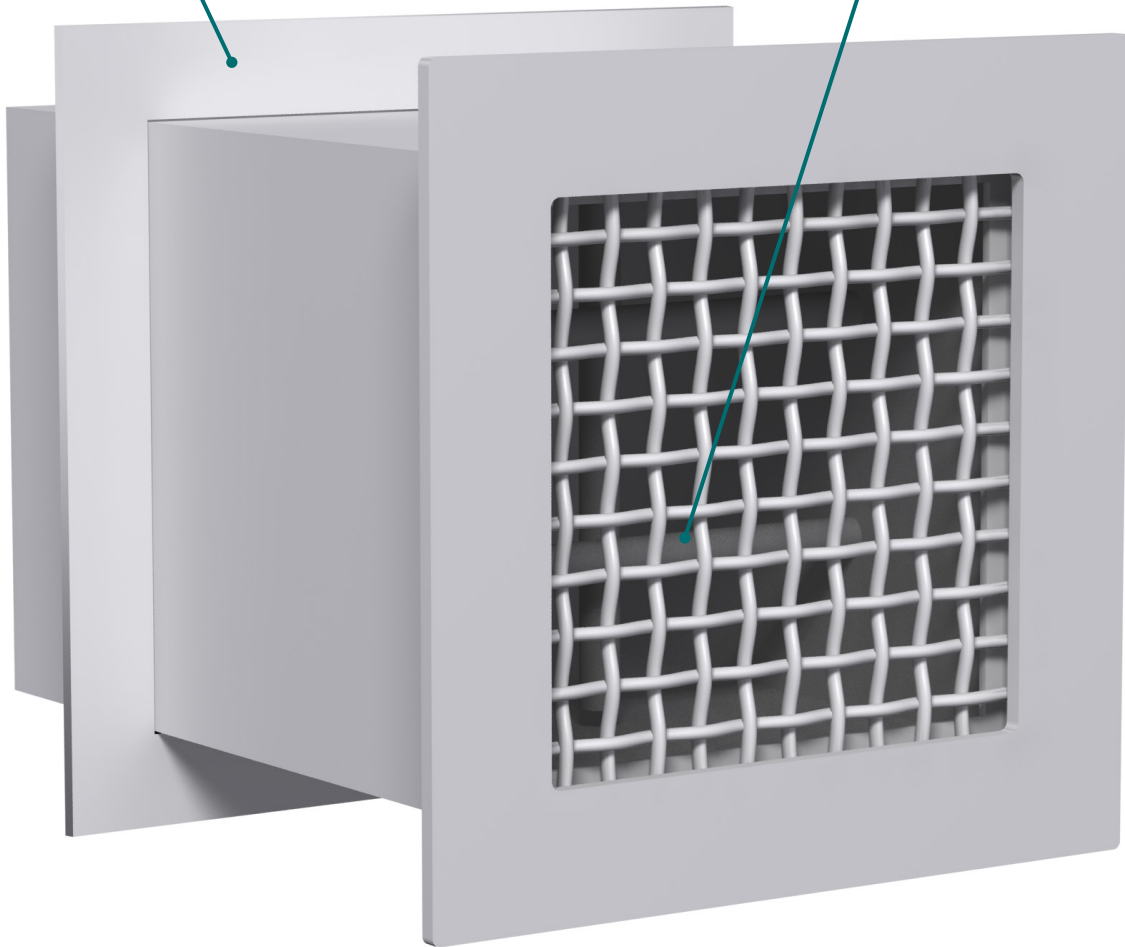
MSSG

Medium Security Screen Grille

The Medium Security Screen Grille (MSSG) features all-welded construction with 10 GA, 3/8 in. x 3/8 in. wire mesh secured to a 10 GA steel frame. Multiple construction options allow the MSSG to be customized to meet installation requirements.

Optional 4-sided mounting frame

Integral steel barrier bars

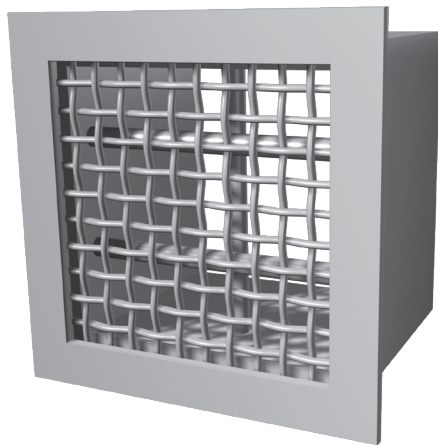


CONSTRUCTION VERSATILITY

- + The 10 GA integral wall sleeve is provided with stitched or continuously welded seems and can be ordered in a variety of thicknesses with a mounting angle for field welding or bent out flanges for pour in place construction.

INTEGRAL BARRIER BARS

- + Integral, 3/4 in. hot rolled steel barrier bars are welded inside the sleeve and at all crossings. The bars are typically installed on 6 in. vertical and 12 in. horizontal centers. Other barrier bar styles are available.



4-SIDED MOUNTING FRAME

- + The 4-sided 1 in. x 1 in. x 1/8 in. hot rolled steel mounting frame is shipped loose for field welding and allows for flexible installation and robust installed assembly.

OPTIONAL TRANSFER GRILLE CONSTRUCTION

- + Transfer grilles are supplied with the same security face style on both ends of the sleeve for poured in place construction.

TYPICAL APPLICATIONS

Security grilles reduce unwanted access to ductwork in spaces where supervision is minimal and vandalism or misuse is a risk. Such areas include: correctional facilities, psychiatric hospitals, rest stops, park facilities, schools and sports venues. Medium security screen grilles feature all-welded construction and integral wall sleeves for medium security applications.

CONSTRUCTION

- + Material
 - Steel
 - Stainless steel
 - All aluminum (minimum security)
- + Size
 - Minimum: 6 in. x 6 in.
 - Maximum: 30 in. x 30 in.
- + Options
 - Dampers
 - Transfer grille construction
 - Various barrier bar styles
 - Various fastening methods

PERFORMANCE DATA

Size	Neck Velocity (fpm)	300	400	500	600	700	800	900	1000
	Velocity Pressure (in. w.g.)	0.006	0.010	0.016	0.022	0.031	0.040	0.050	0.062
	Total Pressure (in. w.g.)	0.028	0.050	0.078	0.112	0.153	0.200	0.252	0.312
6 x 6	Flow Rate (cfm)	75	100	125	150	175	200	225	250
	Sound (NC)	-	-	-	-	19	23	27	31
	Throw (ft.)	7-10-16	9-13-18	11-15-21	13-16-23	14-17-24	15-18-26	16-20-28	17-21-29
8 x 8	Flow Rate (cfm)	133	178	222	267	311	356	400	444
	Sound (NC)	-	-	-	-	20	25	29	32
	Throw (ft.)	5-8-15	7-11-17	9-13-19	11-15-21	12-16-22	14-17-24	15-18-25	15-19-27
10 x 10	Flow Rate (cfm)	208	278	347	417	486	556	625	694
	Sound (NC)	-	-	-	16	21	26	30	33
	Throw (ft.)	7-10-18	9-13-21	11-16-24	13-18-26	15-20-28	17-21-30	18-23-32	19-24-34
12 x 12	Flow Rate (cfm)	300	400	500	600	700	800	900	1000
	Sound (NC)	-	-	-	17	22	26	30	34
	Throw (ft.)	8-12-22	11-16-25	13-20-28	16-22-31	18-24-34	21-25-36	22-27-38	23-28-40
14 x 14	Flow Rate (cfm)	408	544	681	817	953	1089	1225	1361
	Sound (NC)	-	-	-	17	23	27	31	35
	Throw (ft.)	9-14-26	12-18-30	15-23-33	18-26-36	21-28-39	24-30-42	26-32-45	27-33-47
16 x 16	Flow Rate (cfm)	533	711	889	1067	1244	1422	1600	1778
	Sound (NC)	-	-	-	18	23	28	32	35
	Throw (ft.)	11-16-29	14-21-34	18-26-38	21-29-42	25-32-45	28-34-48	29-36-51	31-38-54
18 x 18	Flow Rate (cfm)	675	900	1125	1350	1575	1800	2025	2250
	Sound (NC)	-	-	-	18	24	28	32	36
	Throw (ft.)	12-18-33	16-24-38	20-30-43	24-33-47	28-36-51	31-38-54	33-41-57	35-43-60
20 x 20	Flow Rate (cfm)	833	1111	1389	1667	1944	2222	2500	2778
	Sound (NC)	-	-	-	19	24	29	33	36
	Throw (ft.)	13-20-37	18-26-42	22-33-47	26-37-52	31-40-56	35-42-60	37-45-64	39-47-67
22 x 22	Flow Rate (cfm)	1008	1344	1681	2017	2353	2689	3025	3361
	Sound (NC)	-	-	-	19	25	29	33	37
	Throw (ft.)	14-22-40	19-29-47	24-36-52	29-40-57	34-44-62	38-47-66	40-50-70	43-52-74
24 x 24	Flow Rate (cfm)	1200	1600	2000	2400	2800	3200	3600	4000
	Sound (NC)	-	-	-	20	25	29	33	37
	Throw (ft.)	16-24-44	21-32-51	26-39-57	32-44-62	37-48-67	42-51-72	44-54-76	46-57-80
26 x 26	Flow Rate (cfm)	1408	1878	2347	2817	3286	3756	4225	4694
	Sound (NC)	-	-	-	20	25	30	34	37
	Throw (ft.)	17-26-48	23-34-55	28-43-62	34-48-68	40-52-73	45-55-78	48-59-83	50-62-87
28 x 28	Flow Rate (cfm)	1633	2178	2722	3267	3811	4356	4900	5444
	Sound (NC)	-	-	-	20	26	30	34	38
	Throw (ft.)	18-28-51	25-37-59	31-46-66	37-51-73	43-56-79	48-59-84	51-63-89	54-66-94
30 x 30	Flow Rate (cfm)	1875	2500	3125	3750	4375	5000	5625	6250
	Sound (NC)	-	-	-	21	26	30	34	38
	Throw (ft.)	20-30-55	26-39-64	33-49-71	39-55-78	46-60-84	52-64-90	55-68-95	58-71-101

Performance Notes:

1. Tested in accordance with ASHRAE Standard 70-2006 "Method of Testing for Rating the Performance of Air Outlets and Inlets."
2. All pressures are in in. w.g.
3. NC values are based on a room absorption of 10 dB re 10⁻¹² watts and one grille.
4. Blanks "-" indicate an NC value less than 15.
5. Air flow is in cfm.
6. Throw values are measured in feet for terminal velocities of 150 fpm (minimum), 100 fpm (middle) and 50 fpm (maximum).
7. Throw data is based on supply air and room air being at isothermal conditions.
8. Corrections for return application: add 10 to listed NC; multiply listed total pressure by 1.20 to obtain negative static pressure.
9. Throw is based on wall mounting grille within 18 in. of ceiling, therefore ceiling effect is included in throw values.



Product Improvement is a continuing endeavour at Price. Therefore, specifications are subject to change without notice. Consult your Price Sales Representative for current specifications or more detailed information. Not all products may be available in all geographic areas. All goods described in this document are warranted as described in the Limited Warranty shown at priceindustries.com. The complete Price product catalog can be viewed online at priceindustries.com.